

Participating Hospitals

St. Vincent's One Nineteen
St. Vincent's Birmingham
St. Vincent's Blount
St. Vincent's East
St. Vincent's St. Clair
UAB Hospital
UAB Hospital - Highlands

Primary Care Clinics

Alabama Regional Medical Services
Bessemer Neighborhood Health Center
Cahaba Medical Care
Christ Health Center
Community of Hope Health Clinic
Community Health Clinic
Equal Access Birmingham - UAB
Hope Health Clinic Fairfield
M-Power Ministries
Quality of Life Health Services
Red Crescent Clinic of Alabama
St. Clair Community Health Clinic
St. Vincent's Family Care Clinics
Whatley Health Services

Most medications
are available through:

Dispensary of Hope
340B Pharmacies
Prescription Assistance Programs
Local retail pharmacy low cost programs

PROJECT ACCESS PARTNERS

Altec/Styslinger Foundation *
Callahan Lions Eye Clinic (UAB)
Christ Health Center *
Community Foundation of Greater B'ham *
Grandview Medical Center
Jefferson County Medical Society *
Jefferson County Public Health Fund of the Community Foundation of
Greater Birmingham *
St. Vincent's Health System **
The Caring Foundation of
Blue Cross & Blue Shield of Alabama *
The EyeSight Foundation of Alabama *
UAB Hospital **

& Individual Private Donations*

*Provide Direct Funding
**Provides Ongoing Operational Funding

*Greater Birmingham Project Access is a
Population Health Coalition Program of
Acension St. Vincent's Health System &
UAB Health.*

1 Medical Park Drive East
Birmingham, AL 35235
(205) 838-3421 | FAX: 838-6294
email: ProjectAccess@jcmsAlabama.org
Website: <http://jcprojectaccess.org/>

Hours

Monday-Thursday 8:00 AM to 4:00 PM

Friday 8:00 AM to Noon

*Closed on holidays



NEED HEALTHCARE BUT CAN'T GET INSURANCE?

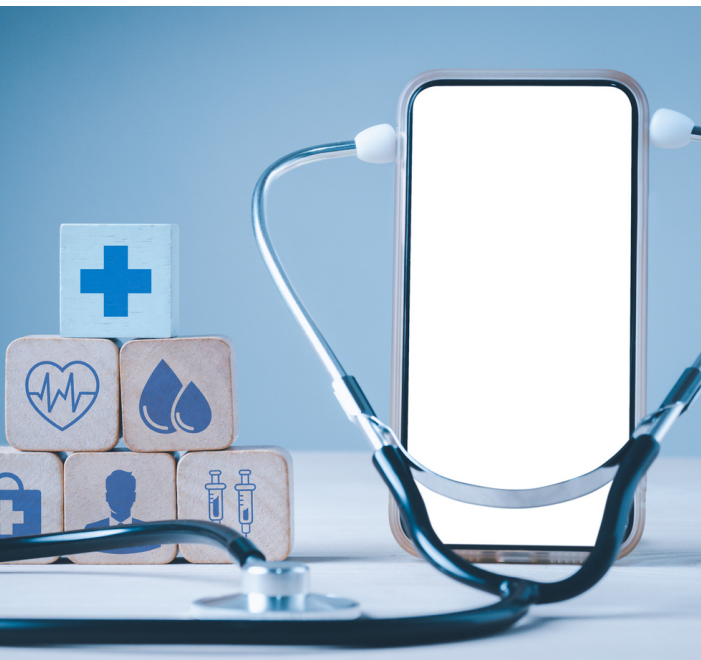
If you are uninsured and not able to get health insurance though the Affordable Care Act AND have a household income less than 200% the current poverty level, then call (205) 838-3421.



Providing donated healthcare and referral services for the uninsured and underserved.

What is Project Access?

Project Access is a physician driven, community-wide effort designed to link uninsured and underserved indigent patients to needed specialty care as well as diagnostic, pharmacy and care coordination services. While the primary focus of Project Access is specialty care provided by volunteer physicians, ancillary care such as labs and imaging are available through partnerships with local hospitals and diagnostic clinics.



Are You Eligible?

Applicants must meet the following to be qualified to enter Project Access:

- Household annual income does not exceed 200% over current Federal poverty level.
- Have no medical insurance and no financial ability to purchase medical insurance.
- Do not qualify for insurance subsidies through the Health Exchange under the Affordable Care Act.
- Do not have Medicare or Medicaid and not eligible for Emergency Medicaid
- Not eligible for healthcare through the VA or Cooper-Green Mercy Health Services.
- Resident of Alabama – and generally a resident of all Alabama counties for at least one year.
- Have a “Medical Home” – Already under the ongoing care of a Primary Care Provider or be willing to accept and follow through on a referral to a Primary Care Provider to facilitate ‘continuity of care’.
- Present valid picture identification and verifiable proof of annual income.

Not all services are offered through Project Access. Some clinics and providers may request a co-pay for your visit. This co-pay does not come back to the Greater Birmingham Project Access Program.

Receiving Care

Step One — Establishing Care

- Patients may apply directly to Project Access by calling (205)838-3421 or be referred by their participating Physician Clinic.
- Patients not currently receiving Primary Care are referred to one of the participating Primary Care Charity Programs to establish a “Medical Home”.

Step Two — Program Entry

- Patient will have an intake appointment to review patient charitable care status.
- Eligible patients are provided a Project Access Identification Card that is valid for one year.

Step Three — Ongoing Care

- Project Access coordinates referrals and schedules medical appointments.
- Provides follow-up case management services.
- Specialty Care such as orthopedics and ancillary care such as labs and x-rays not available through your Primary Care Clinic is referred to Project Access for referral to a participating healthcare provider